

# Technics<sup>®</sup>

Operating Instructions

Speaker System

**SB-C700A**



Music is borderless and timeless,  
touching people's hearts across cultures and generations.  
Each day the discovery of a truly emotive experience  
from an unencountered sound awaits.  
Let us take you on your journey to rediscover music.

Rediscover Music™

**Technics**

Thank you for purchasing this product.

Please read these instructions carefully before using this product, and save this manual for future use.

The cabinets of this product were hand-carved by woodworkers. As a result, the left and right speakers may slightly differ from each other in shape.

### Sales and Support Information

#### Customer Communications Centre

- For customers within the UK: 0333 222 8777
- For customers within Ireland: 01 447 5229
- Monday–Friday 9:00 am – 5:00 pm, (Excluding public holidays).
- For further support on your product, please visit our website: [www.technics.com/uk/](http://www.technics.com/uk/)

## Safety precautions

### WARNING

- Put the speakers on a flat safe surface.
- Do not hang the speakers from the ceiling or on the wall. Doing so may cause the speaker to fall off, causing personal injury.
- Do not place any objects in the bass reflex ports on the rear of the speakers. Doing so may cause fire or personal injury. Pay close attention to children.
- Do not repair the speakers by yourself. Refer servicing to qualified service personnel.

### CAUTION

- Do not stand on the speakers.
- Do not place heavy items on the speakers.
- Do not hold the speaker in one hand to avoid injury by dropping the speaker when carrying.

- Do not expose the speakers to direct sunlight, high temperatures, high humidity, and excessive vibration.
- Do not expose the speakers to rain, moisture, dripping or splashing.
- The speakers and speaker nets use powerful magnets. Do not put them near TVs, PCs or other equipment easily influenced by magnetism.
- You can damage your speakers and shorten their useful life if you play sound at high levels over extended periods.
- Do not touch the diaphragms. Doing so might cause distortion.
- Be cautious when children are near.
- Do not insert a finger into the bass reflex ports on the rear of the speakers. Pay close attention to children as doing so may cause personal injury.
- Do not connect the speakers to an amplifier with an output greater than their allowable input.  
Doing so may overheat the speakers and cause a fire.

Product Identification Marking is located on the bottom of the unit.



### Disposal of Old Equipment

#### Only for European Union and countries with recycling systems

This symbol on the products, packaging, and/or accompanying documents means that used electrical and electronic products must not be mixed with general household waste.

For proper treatment, recovery and recycling of old products, please take them to applicable collection points in accordance with your national legislation.

By disposing of them correctly, you will help to save valuable resources and prevent any potential negative effects on human health and the environment.

For more information about collection and recycling, please contact your local municipality.

Penalties may be applicable for incorrect disposal of this waste, in accordance with national legislation.

# Table of contents

Safety precautions .....	4	Attaching the speaker nets.....	9
Accessories .....	5	Notes on use.....	10
About this unit.....	5	Unit care.....	10
Installation .....	6	Specifications .....	11
Connections .....	7		

## About descriptions in this operating instructions

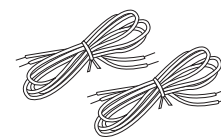
- The illustrations shown may differ from your unit.

## Accessories

- 2 Speaker nets (RYB0400)



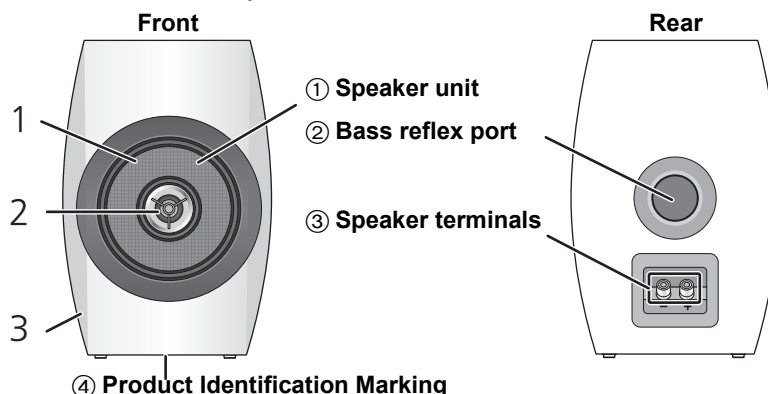
- 2 Speaker cables (For operation checks, 1.2 m) (RFA3620)



- Product numbers provided in this operating instructions are correct as of June 2015. These may be subject to change.

## About this unit

### Names of parts and features of the speakers



- The model number is located on the Product Identification Marking on the bottom of this unit.

- Flat coaxial 2-way speaker unit\*<sup>1</sup>**  
 The newly developed flat coaxial two-way speaker units (woofer and tweeter) realise a point sound source. Technics's original flat woofer diaphragm provides smooth directional characteristics over the entire frequency range without peaks and dips, achieving superb sound localisation and a large soundstage.  
 \*1 Since the flat diaphragm is woven with carbon fibre, its flat panel component has a fine waffle texture.  
 Please note that this does not affect the performance and other characteristics of the speakers.
- Dome tweeter that can reproduce frequencies of up to 100 kHz**  
 The lightweight aluminium diaphragm allows the reproduction of sound over an ultra-wide frequency range that extends up to 100 kHz. The result is a faithful reproduction of audio signals with all nuances intact.
- High rigidity entasis form cabinet**  
 Designed to eliminate unwanted vibration, diffraction reflection, and standing waves, the cabinet allows the reproduction of faithful and rich sound ambience.

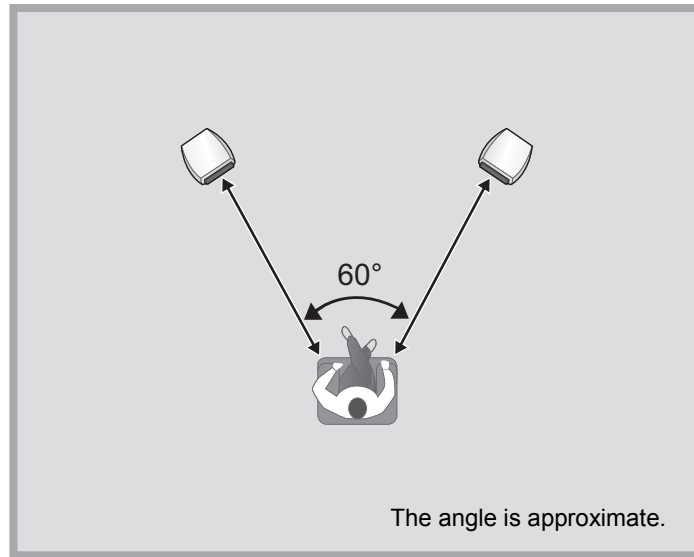
### Recommended devices

We recommend using Technics devices (optional) for superior audio quality.

Product name	Model number
Network Audio Player	ST-C700A
Compact Disc Player	SL-C700
Stereo Integrated Amplifier	SU-C700A

# Installation

e.g.,



- Place the speakers at approximately the same distance from the listening position.
- The speakers produce bass sound from the bass reflex ports on the rear as well as from the front. Install the speakers at least 5 cm away from the walls so that they do not cover the bass reflex ports on the rear.
- When placing the speakers on stands, be sure to consult an installation specialist to protect the speakers from earthquakes.
- Keep the amplifier or any other device and the speakers at least 1 cm away from each other.

## ■ For optimum position

The quality and volume of the bass sound, sound localisation performance, sound ambience, and other factors that determine the audio quality vary depending on the installation location of this unit, listening position, room conditions, and other factors. Refer to the information below when installing the speakers.

### **Determining an installation location.**

- Put the speakers on a flat safe surface.
- To minimise the gap in audio quality between the left and right speakers, install them so that acoustic conditions (reflection and absorption of sound) around them are the same.
- Depending on the way the speakers are placed, the speaker cables may not be long enough. In such a case, use desired cables that are sufficiently long and deliver high quality audio.

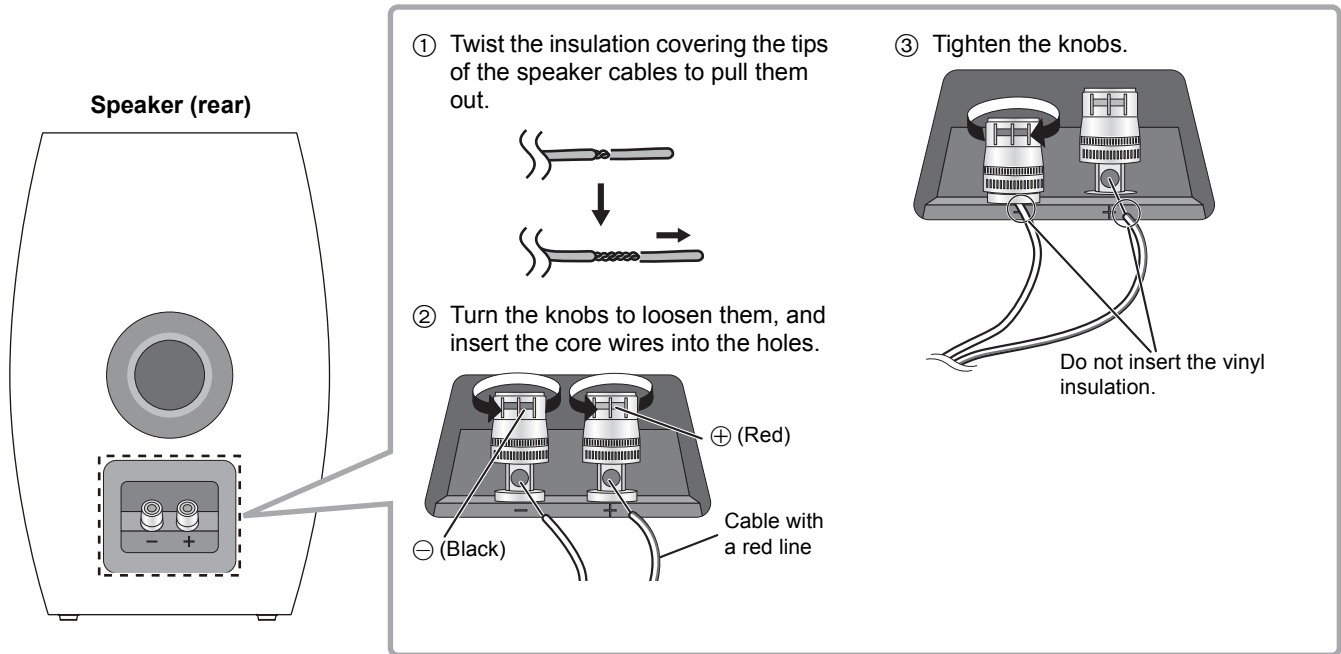
### **Adjusting the distances between the rear of the speakers and the walls**

If you install the speakers close to a wall or in a corner, the bass sound will be more powerful; however, when the speakers are too close to it, sound localisation performance and sound ambience may deteriorate. If this occurs, adjust the distance between the speakers and the front wall, which should be between 30 cm to 60 cm. (Please note that the distance between the speakers and the side walls should be greater than 60 cm.)

# Connections

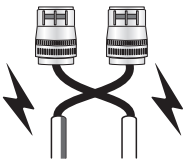
## Connecting the speaker cables

- Keep the terminal knobs and the terminal caps out of reach of children to prevent swallowing.



- Do not place the speakers with the front side down. Doing so may damage the speakers.
- Be careful not to cross (short-circuit) or reverse the polarity of the speaker wires as doing so may damage the amplifier.

### DO NOT

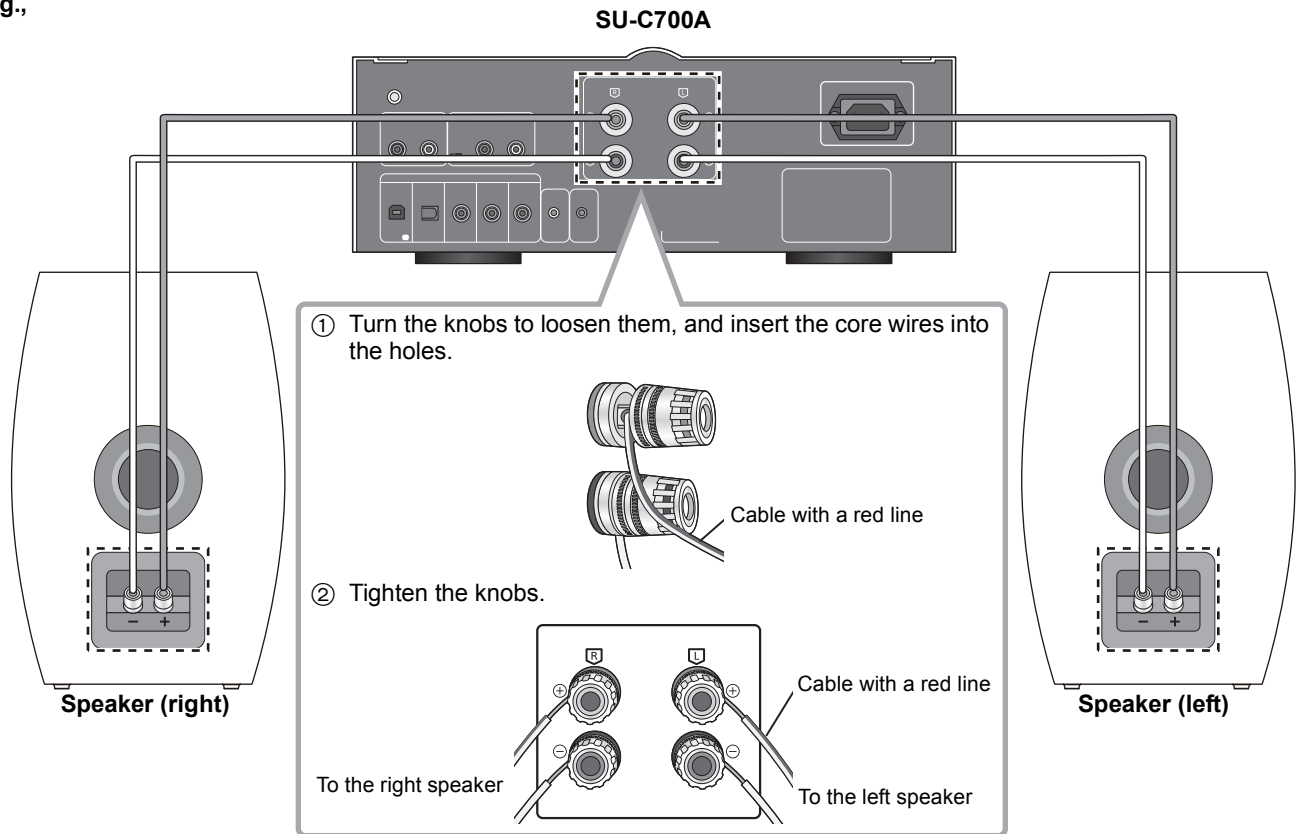


- Check the colours of the speaker cables (supplied) to connect the left and right speakers correctly. Incorrect connection can damage the speakers.

## Connecting with an amplifier

- Before connection, turn off the amplifier and disconnect its power cord.
- For details, refer to the operating instructions of the amplifier.

e.g.,



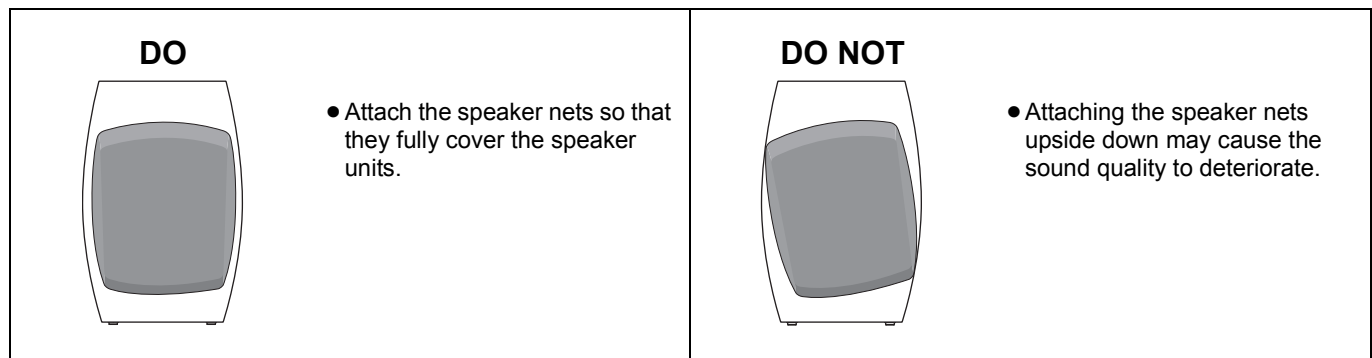
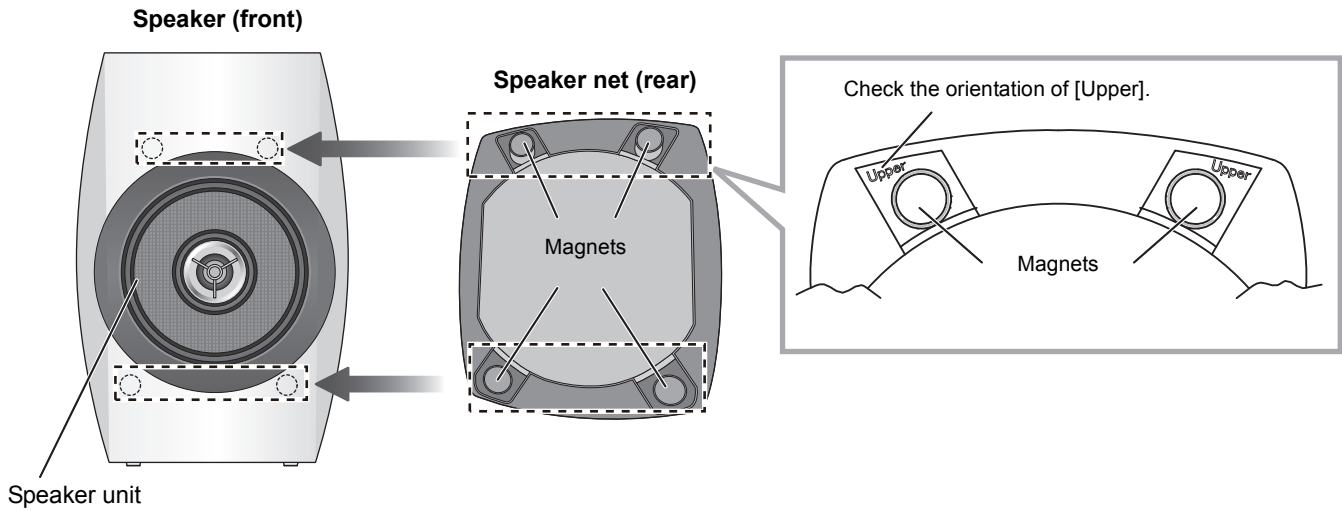
- Do not move the speaker while the speaker cables are connected. This may cause a short circuit.
- When the connections are completed, pull the speaker cables lightly to check that they are connected firmly.
- Wire the polarity (+/-) of the terminals correctly. Not doing so may adversely affect stereo effects or cause malfunction.



# Attaching the speaker nets

The speakers are supplied with speaker nets, which protect the speaker units from dust. Use the magnets to fix the speaker nets to the speakers.

- Attach each speaker net so that the upper part of its back indicated as [Upper] is attached to the upper part of each speaker.
- Instruction labels are attached to the upper part of each speaker net. Remove them before use.



- You can enjoy superior quality audio by removing the speaker nets before playback.

# Notes on use

**To protect the speakers from damage caused by excessive input, observe the following precautions:**

- Reduce the volume in the following cases to avoid damage:
  - When playing distorted sound.
  - When the speakers are receiving howling from a microphone or record player, noise from FM broadcasts, or continuous signals from an oscillator, test disc, or electronic instrument.
  - When adjusting the sound quality.
  - When turning the amplifier on or off.
- Avoid raising the volume level too much when enhancing the treble sound with a graphic equalizer or any other controls.
- Avoid outputting excessively loud sound with a small power amplifier. Doing so will increase the amplifier's harmonic distortion and may damage the speakers.
- You can damage your speakers and shorten their useful life if you play sound at high levels over extended periods.

# Unit care

Clean the speakers with a soft, dry cloth.

- When dirt is heavy, wring a wet cloth tightly to wipe the dirt, and then wipe it with a dry cloth.
- Do not use solvents including benzine, thinner, alcohol, kitchen detergent, a chemical wiper, etc. This might cause the exterior case to be deformed or the coating to come off.

# Specifications

Type	Coaxial 2 way 2 Speaker Bass reflex
Speaker unit	
Woofer	16 cm Flat Type×1
Tweeter	1.9 cm Dome Type×1
Impedance	4 Ω
Input power (IEC)	100 W (MAX) 50 W (RATED)
Sound pressure level	85 dB (2.83 V/m) 82 dB (W/m)
Frequency range	40 Hz to 100 kHz (-16 dB) 45 Hz to 80 kHz (-10 dB)
Crossover frequency	2.5 kHz
Dimensions (W×H×D)	220 mm×336 mm×286 mm (include net 8 mm and back terminal knob 5 mm)
Mass	Approx. 8.5 kg
Operating temperature range	0 °C to +40 °C
Operating humidity range	20 % to 80 % RH (no condensation)



- Specifications are subject to change without notice.
- Mass and dimensions are approximate.

Headquarter Address: Panasonic Corporation  
Kadoma, Osaka, Japan  
Importer for Europe: Panasonic Marketing Europe GmbH  
Panasonic Testing Centre  
Winsbergring 15, 22525 Hamburg, Germany

---

Panasonic Corporation

**Web Site:** <http://www.panasonic.com>

En

